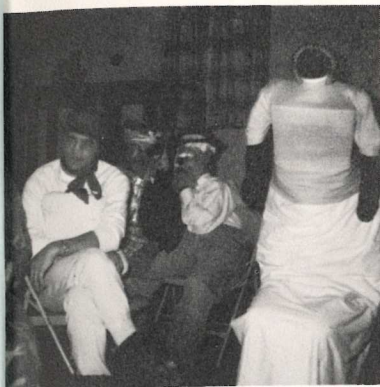


ENCE WATTERUD
L.P.B.S.
ils Lake, N. D.

as born and raised in
e, N. D. He found Christ
nal Savior at the Powers
I Tabernacle.

v. 3:5-6

ery much at home behind
ying-"This I delight in."
ce Williams



"Guess who?"



"Chow line"



"Boys' dorm"



"Strumming and singing"



"Help yourself"



"Keep trying"



"Mrs. Graves and Keetha"



"Prayer before class"

S
C
H
O
O
L

L
I
F
E